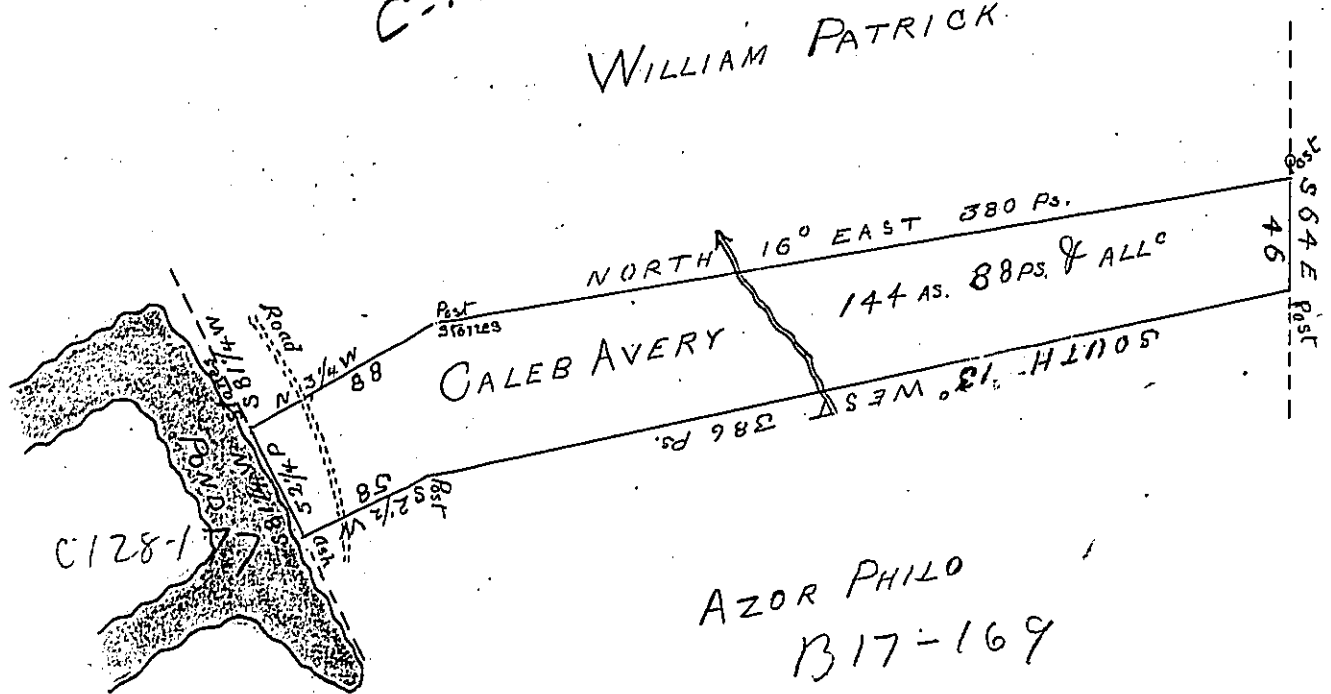


C-166-253

WILLIAM PATRICK

SAMUEL THOMPSON



Draught of a tract of Land Situate on a pond of Water part of the waters of Buttermilk falls creek in the Township of Falls in the County of Luzerne and adjoining Lands Surveyed to Samuel Thompson and others Containing One hundred forty four acres and Eighty Eight perches with the usual allowance of six perches. Surveyed the above described tract of Land the 8th day of July A^d D^e 1830 for Caleb Avery by virtue of his Warrant dated the 22nd day of March 1830.

Henry Colt D.S.

To Jacob Spangler Esq^r
 Surveyor General

N.B. The above survey includes Caleb Avery's actual improvement and settlement.

IN TESTIMONY that the above is a copy of the original remaining on file in the Department of Internal Affairs of Pennsylvania, made conformably to an Act of Assembly approved the 16th day of February, 1833, I have hereunto set my Hand and caused the Seal of said Department to be affixed at Harrisburg, this first day of September 1903.

Grace P. Brown
 Secretary of Internal Affairs.